



INSPIRE
A NEW
GENERATION
OF LIFELONG
LEARNERS

CONTENTS

2

SIT'S VISION, MISSION
AND CORE VALUES

3

SIT'S JOURNEY
TO DATE

4

WHAT MAKES
SIT UNIQUE

16

CONTACT
DETAILS

SIT'S VISION, MISSION AND CORE VALUES

VISION

A leader in innovative university education by integrating learning, industry and community.

MISSION

To develop individuals who build on their interests and talents to impact society by providing a nurturing environment that is uniquely enriched by world-class partners.

CORE VALUES

PRIDE

United in Purpose

- Build a strong sense of purpose
- Work cohesively as a team

Respect for Others

- Earn trust and extend respect by exemplary behaviour
- Be professional and open towards diverse views and values

Uncompromising Integrity

- Set and achieve the highest ethical standards and professionalism
- Be truthful and accountable to self, organisation and society at all times

Purposeful Dynamism

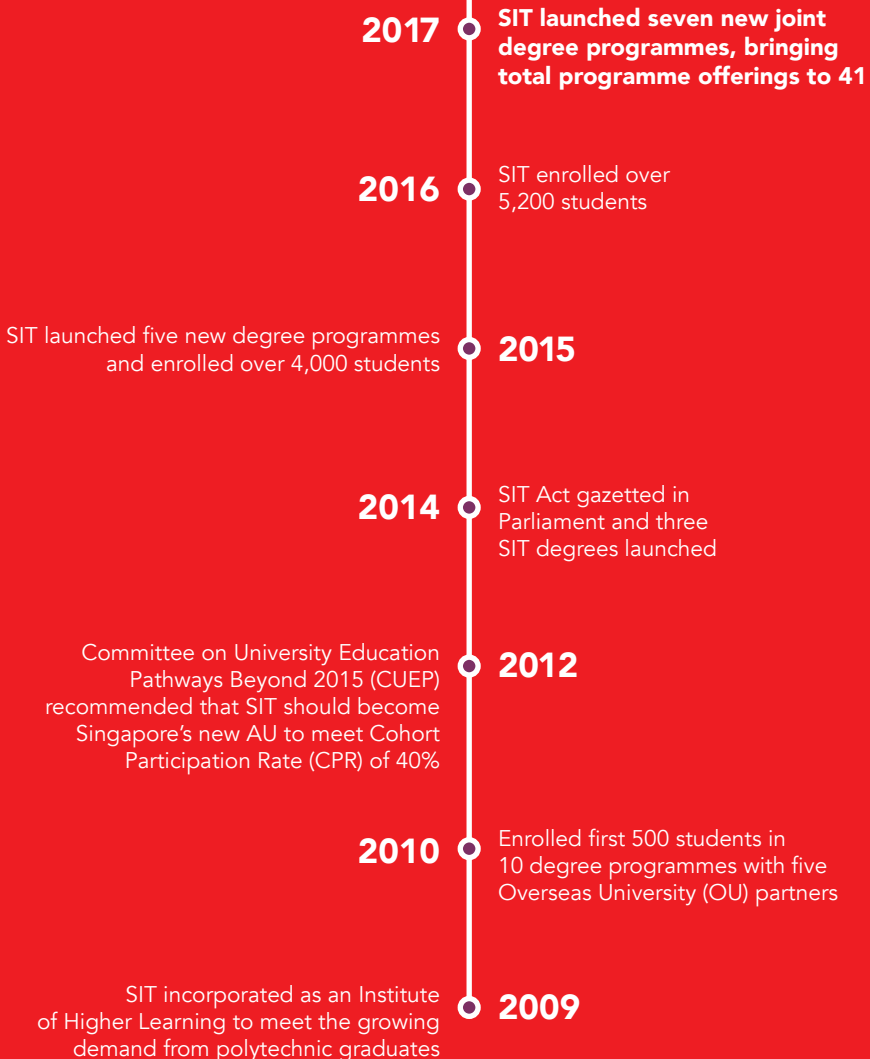
- Embrace change
- Be enterprising, creative, adaptable and daring to take risks

Relentless Pursuit of Excellence

- Strive for alignment of personal and organisational excellence in pursuit of shared purpose
- Be a learning organisation through continuous learning, unlearning and re-learning

SIT'S JOURNEY

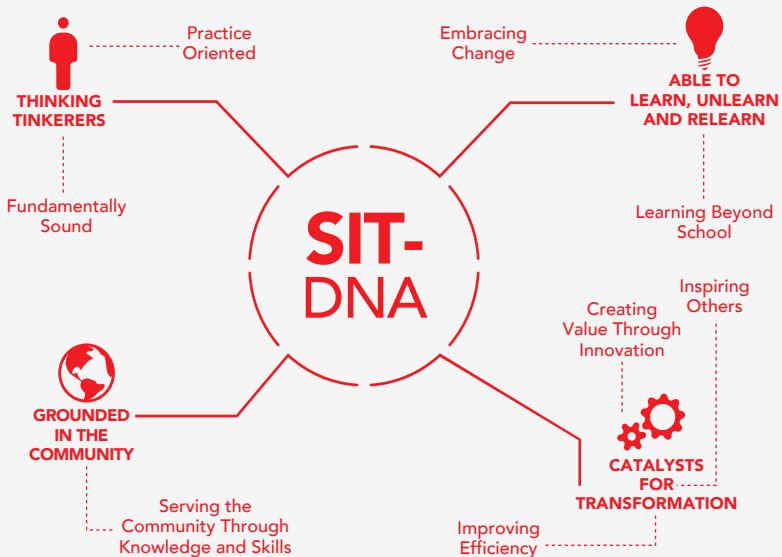
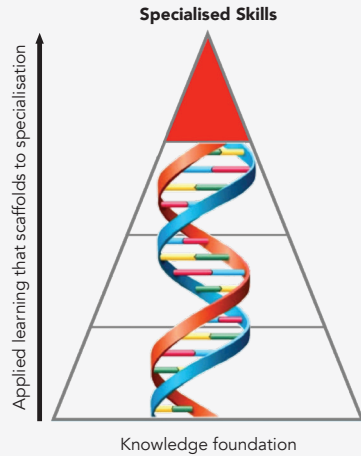
TO DATE



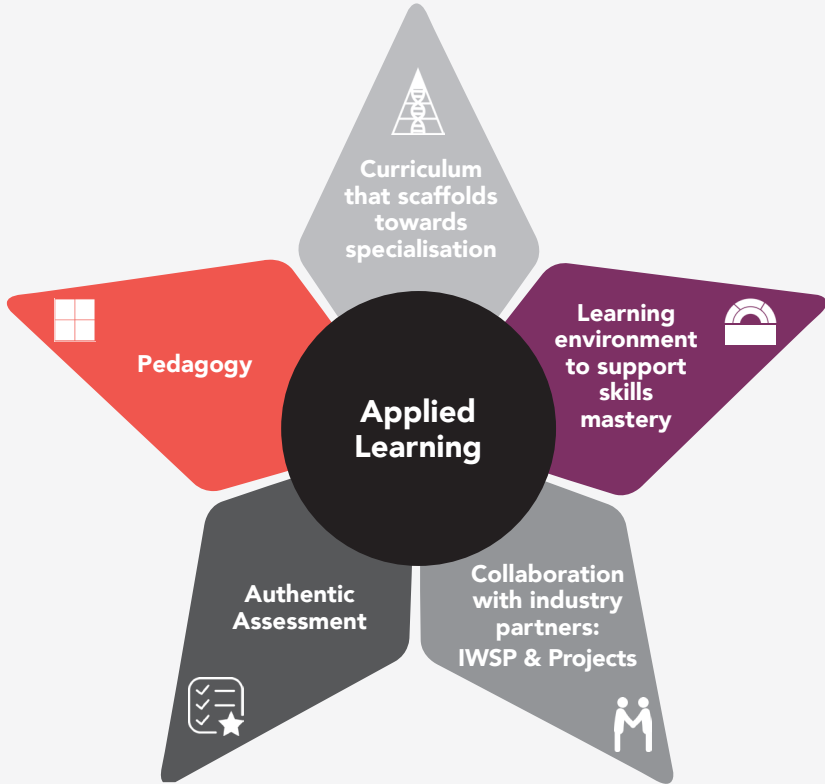
IMBUING STUDENTS WITH SIT-DNA

Embedding skills, values and mindsets
in our curriculum.

Producing Best-In-Class Specialists with Broad-based Transferable Skills to Meet Changing Needs of Industry



**APPLIED
LEARNING
@ SIT**



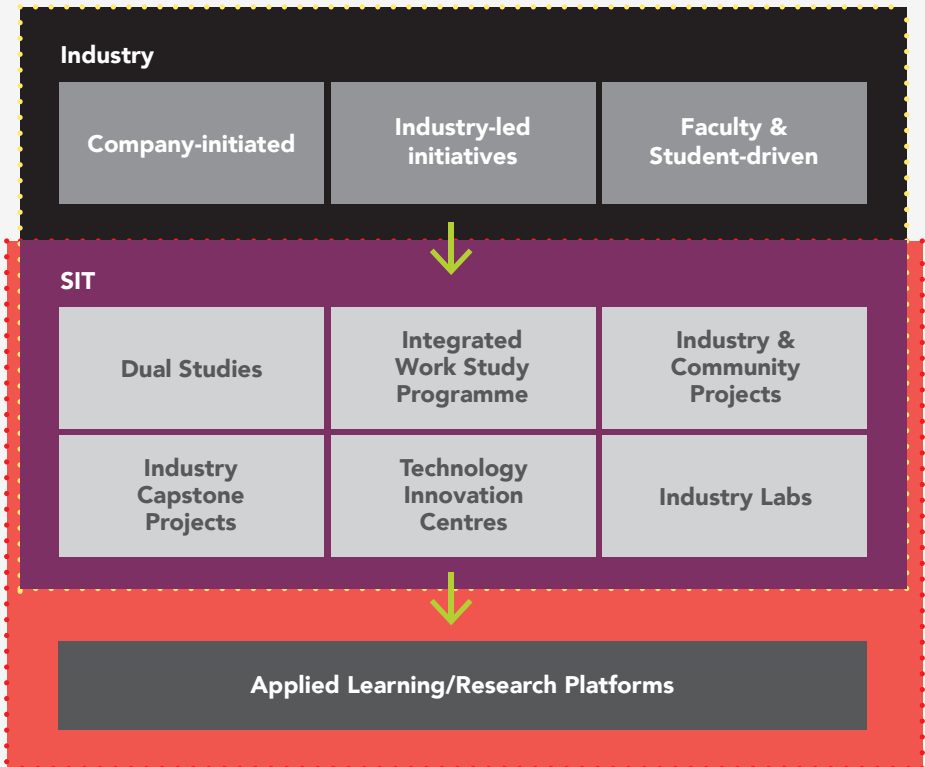
Faculty at Applied Learning Retreat



Group Discussion on Applied Learning Concept

APPLIED LEARNING PLATFORMS

Integrating industry's
needs with learning



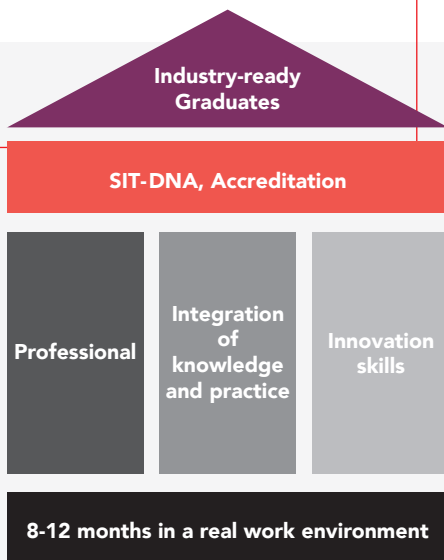
INTEGRATED WORK STUDY PROGRAMME AS AN APPLIED LEARNING PLATFORM

Preparing our students to be industry-ready:

- Job scope based on real work environment
- Realistic job application experience
- Active mentoring by Faculty and Professional Officers
- Active learning by integrating knowledge and practice



Students at work

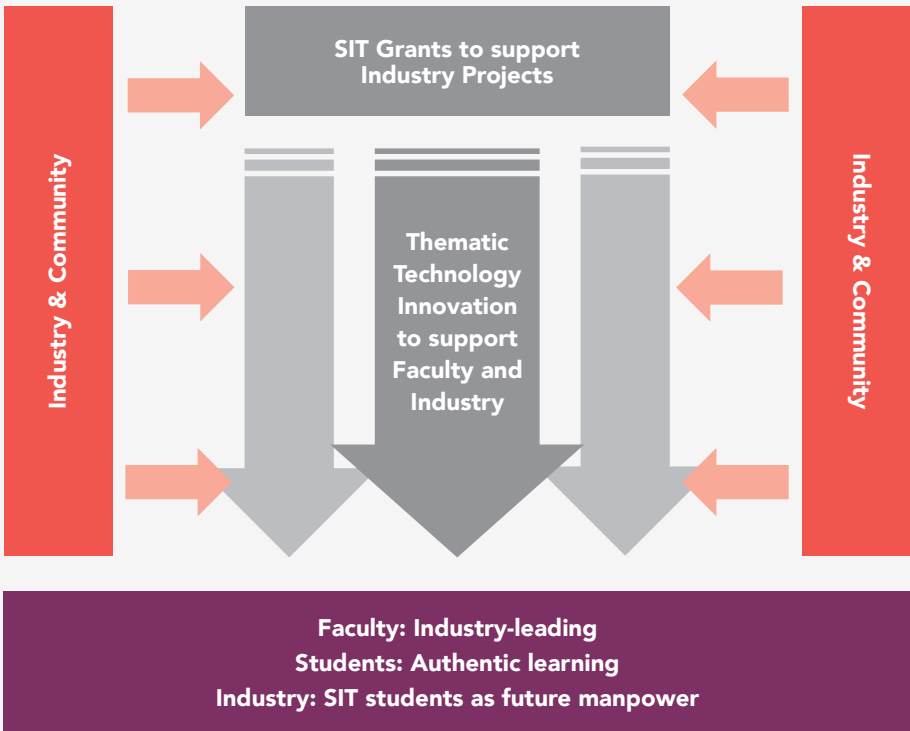


Mentoring by work supervisor



Mentoring by Professional Officer Supervisor

**APPLIED
RESEARCH
– KEY TO
SIT’S VISION**



ENTERPRISE DEVELOPMENT

Helps students turn their business ideas into reality. Focusing on three key phases – from ideation to implementation, the Step Up to Start Up® (SU)² system offers an integrated approach that incorporates mentorship, incubation, training and funding programmes to help aspiring student entrepreneurs.

STEP TO UP START UP



Get Ready

- Present business idea
- Participate in training programmes and workshops



Act on Ideas

- Submit proposal and apply for grant
- Join our mentorship programme
- Showcase your idea and pitch to a panel



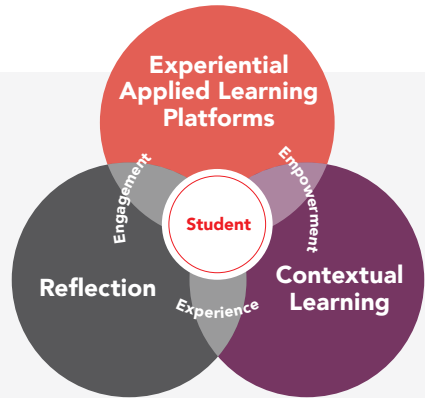
Start Business

- Incubation
- Mentorship

COMMUNITY INNOVATION

Learn & Act Programme

- Provide platforms for students to be agents of innovation
- To make impactful contributions to the community
- Equip students with opportunities to apply their skillsets to support the affected community



Engagement

An Innovation Challenge from affected community organisation



Site visit with community organisation



Empowerment

Ideation and Design Thinking



Co-creation with community



Rapid prototyping with affected community organisation



Community Innovation Project Planning Process

Implementation and Reflection

Share and learn on impact with affected community organisation



Pilot in real-world environment



SIT-GSA Interior Design Innovation for Healthcare Spaces in collaboration with Yishun Community Hospital

LEVERAGING OVERSEAS UNIVERSITY PARTNERS



Extended Eco-system of Reputable Resident Global Partners

- Promote exchange of expertise, knowledge and culture for SIT and Singapore's industry
- Respond quickly to new industry needs and mount programmes swiftly including joint degrees
- Deliver future postgraduate and SkillsFuture programmes that leverage on expertise not readily available in Singapore
- Tap onto Overseas University partners complementary research capabilities and networks to augment local industry innovation needs

ORGANISED FOR FLEXIBILITY

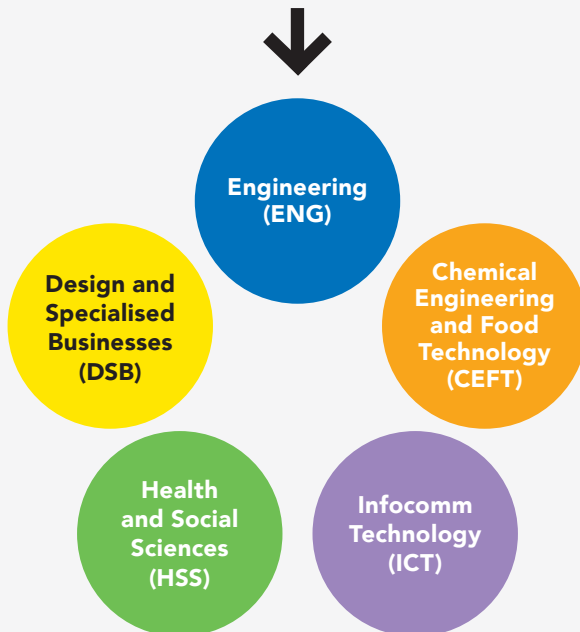
Unique Academic Staff Structure

SIT's matrix academic structure promotes interdisciplinary collaborations and allows faculty to teach programmes across related disciplines. Accordingly, our academic staff are organised into technical domain clusters.

SIT also has a corps of Professional Officers, who use their rich industry experience to mentor and coach our students in their industry attachments and projects.

Centralised Resources

Professional Officers Centralised Labs



ORGANISATIONAL EXCELLENCE

SIT has started its Organisational Excellence (OE) journey using Quality Assurance Framework for Universities as a base to start development of the SIT Organisational Excellence Framework.

The emphasis will be on continual improvement of the organisation as it grows in size, complexity and endeavour.

The University Self-Assessment Report (USAR) was submitted to MOE in November 2016. MOE's External Review Panel will visit SIT in October 2017.



SINGAPORE INSTITUTE OF TECHNOLOGY UNIVERSITY SELF-ASSESSMENT REPORT 2016



SIT'S CAMPUS VISION

The SIT Campus is:

- A connected campus that enables innovative applied learning for students and borderless collaborations with our partners
- A vibrant and sustainable play-work environment that nurtures holistic personal growth in a home away from home
- A garden campus and inviting agora that energises fun learning for the community and industry

The complexity and scale of the master planning task led to the formulation of six campus development themes in 2015, evolved from the 17 master planning subcommittees that were first created in 2014:



University Workplace – demonstration of SIT's applied learning pedagogies and organisational culture through formal and informal office and classroom spaces, collaborative spaces and transitional spaces.



Info-enabled Campus – open access to information and people that promotes serendipitous sharing. Deploying technologies for enhancing quality of life and education on campus.



Living Spaces – environments that complement formal academic and professional training e.g. training facilities for life skills and personal development, student services, sports & recreation, residential, and commercial.



Public Realm – areas of the university open for public engagement, creating learning opportunities with the community.



Access and Wayfinding – effective movement of the masses with moments of learning.



Buildings and Infrastructure – fundamental smart infrastructure to support the needs of the university in a sustainable and safe manner.

EMPLOYEE WELLNESS

SIT's Employee Wellness Committee (EWC) organises exciting activities that encourage fitness, nurture wellness, spark creativity and build unity.



Durian Fiesta



Bukit Timah Nature Reserve Walk



SIT Staff Night



Badminton Interest Group



SIT Bowling Tournament



Employee Wellness Committee

CONTACT DETAILS

CONNECT WITH
US ON SOCIAL MEDIA



[SingaporeTech](#)



[@SingaporeTech](#)



[@SingaporeTech](#)



[Singapore Institute of Technology \(SIT\)](#)



[Singapore Institute of Technology](#)

For enquiries regarding corporate positions,
kindly email HR_Corporate@SingaporeTech.edu.sg

For enquiries regarding faculty positions,
kindly email HR_Faculty@SingaporeTech.edu.sg

Interested applicants please apply at
<https://sit-faculty.hbcareers.com/>

For more about us, please visit
<http://www.singaporetech.edu.sg/>

LIVING AND WORKING IN SINGAPORE

With one of the lowest personal income tax rates in the world, solid infrastructure, world-class medical facilities, a highly regarded education system, low crime and health risks, Singapore offers an ideal environment for those who aspire to build a successful career and family.

For more useful information on living and working in Singapore, please visit www.contactsingapore.sg.



Singapore Institute of Technology

SIT@Dover, 10 Dover Drive, Singapore 138683

Main +65 6592 1189

Fax +65 6592 1190